

Soğuk Depo Paneli

Cold Storage  
Sandwich Panel





#### Frigocare Soğutma Fabrika /Frigocare Refrigeration Factory

Fabrika Adres: Arlı Organize Sanayi Sitesi | Fevziçakmak Mah.  
Sehit M.Tünel Cad. No:7/E | Karatay/Konya/Türkiye

T: +90 (332) 245 50 32  
Gsm: +90 (545) 517 79 75  
E: info@frigocare.com.tr  
www.frigocare.com.tr  
www.frigocarerefrigeration.com



#### Frigocare Konya Teknopark AR-GE Merkezi / R&D Center

Konya Teknoloji Geliştirme Bölgesi |  
TGB1 Alanı | Akademi Mah. Gürbulut Sok.1  
No: 67A-B01/N | Selçuklu/Konya/Türkiye  
T: +90 (332) 245 50 32  
Gsm: +90 (545) 517 79 75  
E: arge@frigocarerefrigeration.com  
www.frigocare.com.tr  
www.frigocarerefrigeration.com



**Frigocare Soğutma**, iç Anadolu'nun en önemli sanayi ve ticaret merkezlerinden biri olan Konya'da kurulmuştur. Kara, hava, deniz ve demiryolu bağlantılarıyla güçlü bir lojistik altyapıya sahip olan Konya, Frigocare'in hem yurt içi hem de yurt dışı projelerinde stratejik bir üs konumundadır.

20 yılı aşkın sektör tecrübemizle, anahtar teslim soğuk hava deposu ve gıda işleme tesisleri alanında uzmanlaşmış bulunmaktayız. Bugüne kadar; gıda üretim ve depolama tesisleri, soğuk hava depoları, şoklama ve donuk muhafaza odaları, gaz geçirmez depolar, hijyenik temiz odalar, yüksek raflı taze ve donmuş ürün depoları, gıda lojistik merkezleri, endüstriyel soğutma sistemleri, muz olgunlaştırma odaları ve su ürünleri işleme tesisleri gibi birçok projeyi başarıyla hayata geçirdik.

Frigocare olarak, müşteri memnuniyetini en önemli referansımız olarak görüyoruz. Deneyimli mühendis, teknisyen ve saha ekiplerimizle projelerin planlama aşamasından devreye alma ve satış sonrası desteğe kadar tüm süreçlerinde hızlı, güvenilir ve yüksek kalite standartlarında çözümler sunuyoruz. Güçlü koordinasyon kabiliyetimiz ve kesintisiz satış sonrası destek hizmetlerimiz sayesinde, müşterilerimizle uzun vadeli ve güvene dayalı iş birlikleri kuruyoruz.

Teknolojik gelişmeleri yakından takip eden ve yeniliği işimizin merkezine koyan anlayışımız, 2025 yılı itibarıyla Konya Selçuk Üniversitesi Teknopark bünyesinde faaliyete geçen Ar-Ge ofisimizle daha da güçlenmiştir. Ar-Ge merkezimizde geliştirdiğimiz yenilikçi ve verimli çözümlerle, sektöre katma değer sağlarken müşterilerimizin geleceğe daha sağlam ve sürdürülebilir adımlarla ilerlemesine katkı sunuyoruz.

Frigocare, faaliyet gösterdiği tüm ülkelerde ekonomik, çevre dostu ve sürdürülebilir çözümler üretmeyi ilke edinmiştir. Endüstriyel soğutma ve gıda işleme projelerinizin her aşamasında güvenilir bir çözüm ortağı olarak yanınızda olmaktan gurur duyar, sizinle birlikte en doğru ve en verimli çözümleri geliştireceğimize yürekten inanırız.

**Frigocare Refrigeration** was established in Konya, one of the most important industrial and commercial centers of Central Anatolia. With its strong logistics infrastructure supported by road, air, sea, and railway connections, Konya serves as a strategic hub for Frigocare's domestic and international projects.

With over 20 years of industry experience, we specialize in turnkey cold storage facilities and food processing plants. To date, we have successfully delivered numerous projects including food production and storage facilities, cold storage warehouses, blast freezing and frozen storage rooms, gas-tight storage facilities, hygienic clean rooms, high-bay fresh and frozen product warehouses, food logistics centers, industrial refrigeration systems, banana ripening rooms, and seafood processing plants.

At Frigocare, we consider customer satisfaction to be our most valuable reference. With our experienced engineers, technicians, and field teams, we provide fast, reliable, and high-quality solutions at every stage of our projects—from planning and design to commissioning and after-sales support. Thanks to our strong coordination capabilities and continuous after-sales services, we build long-term, trust-based partnerships with our clients.

Our commitment to closely following technological advancements and placing innovation at the core of our work has been further strengthened by the establishment of our R&D office within the Selçuk University Teknopark in Konya as of 2025. Through the innovative and efficient solutions developed in our R&D center, we aim to add value to the industry while helping our clients move toward the future with stronger and more sustainable steps.

Frigocare is committed to producing economical, environmentally friendly, and sustainable solutions in all the countries where it operates. We take pride in being a reliable solution partner at every stage of your industrial refrigeration and food processing projects, and we sincerely believe that together we will develop the most accurate and efficient solutions.

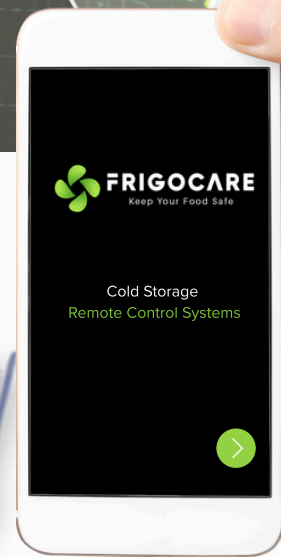


Frigocare Soğutma; Teknolojinin gelişen imkanlarını soğuk depolama sektörüne aktarmak için Selçuk Üniversitesi Teknoloji Geliştirme Bölgesi Konya Technopark bünyesinde bir araştırma ve geliştirmeye ofisi kurmuştur.

Frigocare Refrigeration has established a research and development office within the Selçuk University Technology Development Zone, Konya Technopark, with the aim of transferring the advancing capabilities of technology to the cold storage industry.

## FRIGOCARE SOĞUTMA, SEKTÖRÜN EN GELİŞMİŞ AR-GE MERKEZİNE SAHIPTİR.

Frigocare Refrigeration has the most advanced R&D center in the industry.



# Soğutma Sistemleri

## Refrigeration Systems



### Soğutma Çözümleri

### Refrigeration Solutions

- CO2 / NH3 Sistemler
  - Freon Soğutma Sistemleri
  - Isı Geri Kazanım Sistemleri ve daha birçok nitelikler içerir.
- CO2 / NH3 Systems
  - Freon Refrigeration Systems
  - Heat Recovery Options
  - Dairy&milk factories and many more ...



\*The cooling system is determined on a case-by-case basis for each project, in accordance with customer needs and requirements.



## UYGULAMALAR / APPLICATIONS



### Kırmızı -Beyaz Et Meat & poultry

Mezbahalar  
Et Depolama

Slaughterhouses  
Meat storage



### Süt Endüstrisi Dairy Industry

Süt ürünleri ve peynir  
fabrikaları

Dairy&milk factories  
Cheese factories



### Hızlı Dondurma (IQF) Fast Freezing (IQF)

Bireysel Hızlı Dondurma  
ve Şoklama Tesisleri

Individual Quick Freezing  
and Shock Freezing  
Facilities



### Patates & Soğan Potatoe & Onions

Patates ve  
Soğan Havalandırma  
Sistemleri

Potato and  
Onion Ventilation  
Systems

### Kanatlı Hayvan Poultry Slaughterhouses

Kanatlı Hayvan  
Kesimhaneleri

Poultry Slaughterhouses



### Deniz Ürünleri Seafood

Balık İşleme Tesisleri

Fish Processing Facilities



### Lojistik Depo logistics warehouse

Lojistik Depo Soğutma  
Sistemleri

Logistics Warehouse  
Refrigeration Systems



### Meyve & Sebze Fruit & Vegetables

İşleme ve Depolama  
Tesisleri

Processing and  
Storage Systems



Tüm yiyecek ve içecek işleme depolama uygulamalarıyla ilgili uzmanlığa sahibiz.

We have broad experience in all F&B - related processes and applications

- Et endüstrisi
- Balık endüstrisi
- İçecek sektörü
- Süt ürünleri
- Unlu mamüller

- Meat industry
- Fish industry
- Breweries
- Dairy industry
- Bakeries etc.

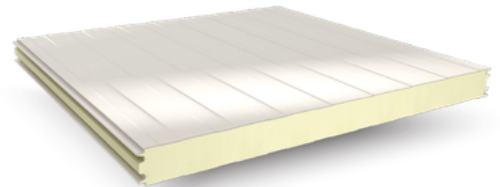


# Cold Storage Sandwich Panels

Non-locking panel

## High-Performance Cold Storage Panel Solutions

Cold Store Controlled Environment insulated panel systems consists of a wide range of panels and systems for use in cold stores, ambient rooms, clean rooms and food processing facilities. Our sandwich panels range has outstanding performance in the critical building materials performance areas of fire, structural, airtightness, thermal bridging, vapour and water tightness.



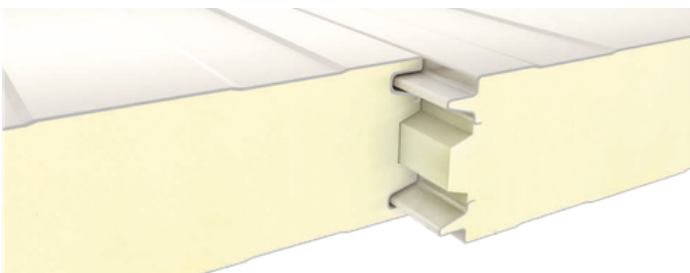
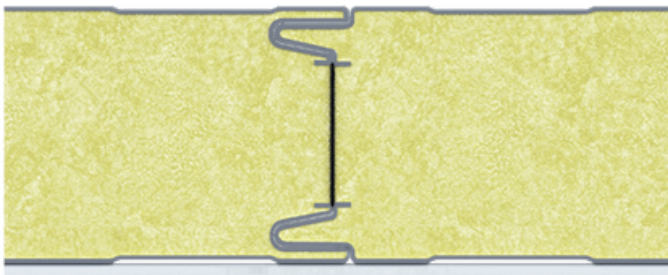
### High-Performance Cold Storage Panel Solutions

Area of Application: Cold Store  
Useful Width: 1100 mm / 1000 mm  
Minimum Length: 2.40 m  
Maximum Length: Depends on Transport Conditions  
Polyurethane: PIR  
Density (EN 1602): 40 (2) kg/m<sup>3</sup>

### Material Specifications

Polyurethane – PIR Thickness: 80 – 100 – 120 – 150 – 200 mm  
Class of Non-Flammability (EN 13501): B-s2,d0  
Metal Type: Prepainted Galvanized Sheet  
· Aluminum, Prepainted Aluminum  
· Stainless Steel  
Standard Top Metal Thickness: 0.50 – 0.60 mm  
Standard Bottom Metal Thickness: 0.50 mm

### Connection Detail



### Colour Options



### Product Features

Striped and smooth surface pattern options  
Painted galvanized sheet, stainless steel, or PVC film laminated interior and exterior surface alternatives  
Fire resistance class according to TS EN 13501-1: B-s2; d0 for PUR insulated cold storage panels; B-s1; d0 for PIR insulated cold storage panels  
Production flexibility in desired lengths between 2 m and 12 m  
Thickness options of 80-100-120-150-180-200 mm  
Thermal transmittance coefficient U value according to TS EN 14509, ranging from 0.27 to 0.11 W/m<sup>2</sup>K depending on panel thickness  
PUR and PIR insulation alternatives  
ISO, TSE, CE quality certificates  
Frigocare Refrigeration, the cold storage specialist in sandwich panels, ensures perfect thermal insulation in your cold storage facilities. This means that with Frigocare Refrigeration's cold storage sandwich panels, temperature is entirely under your control.  
Cold Storage Sandwich Panels, with their excellent bonding properties, stand out as the best choice for covering cold rooms or cold storage areas required by sectors such as food, pharmaceuticals, chemicals, healthcare, etc., and for the thermal insulation of these areas. Cold storage sandwich panels maintain your desired temperature and control heating and cooling. This ensures energy efficiency.  
In addition to their airtight structure that prevents heat loss, cold storage sandwich panels also offer smart solutions for your cold storage areas with their easy installation, quick setup, and cost-effective investment features.  
PUR and PIR insulation fillers that comply with international standards are used to provide the best thermal insulation in cold storage sandwich panels. Cold storage sandwich panels, which also have different joint detail alternatives, offer you highly energy-efficient, hygienic and reliable environments. Produced in thicknesses ranging from 80 mm to 200 mm, cold storage sandwich panels are available with ribbed and smooth surface finishes, as well as stainless steel and PVC film laminated surface options.

\*Cold room sandwich panels, fire resistance class, and compliance standards are determined individually for each project through mutual consultation based on customer needs and requirements.



# Cold Storage Sandwich Panels

## lock Panel

### High-Performance Cold Storage Lock Panel Solutions

Sandwich panels which we manufacture as locked panels are at a density of 40-42 kg/ m<sup>3</sup> polyurethane filled panels. Sandwich panels that has 0.50 mm thickness; we can produce it with RAL 9002 colored galvanized painted sheet, PVC coated and 304 quality stainless sheet.

### High-Performance Cold Storage Panel Solutions

Sandwich Panels are produced in «CE» Standards. Perfect Consolidation

We contribute to reducing your energy costs with corner panel solutions that prevent thermal bridges and provide ease of installation.

### Material Specifications

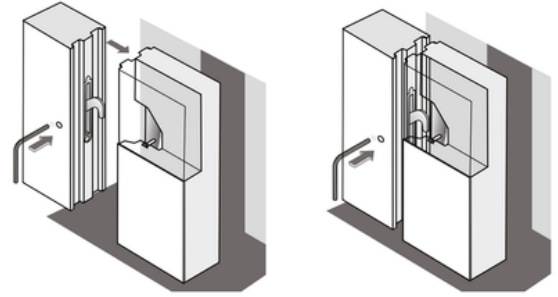
Panel Kalınlık Çeşitleri: 80 mm - 100 mm - 120 mm - 160 mm - 200 mm En: 1180 mm Uzunluk: 12000 mm uzunluğa kadar Panel Thickness Types: 80 mm - 100 mm - 120 mm - 160 mm - 200 mm Width: 1180 mm Length: Up to 12000 mm long

In addition to the male-female connection, a special lock is placed every 1000 mm, ensuring full sealing.

### Lock System



### Connection Detail



- Sandwich panels; thanks to its locked structure it provides a high level of impermeability by pulling the locked panel to itself.
- Sandwich panels are in male and female form and are locked to each other with an eccentric locking system using a lock on 1.2m<sup>2</sup>.
- In addition to the male-female connection, a special lock is placed every 1000 mm, ensuring full sealing.
- Thanks to male-female joint connection heat losses are prevented and it provides ease of assembly and also creates a heat barrier.

In floor applications, we have a variety of productions suitable for customer preferences, including 304 Cr-Ni, Aluminum coated and Plywood coated. We also provide engineering support for the right project in construction applications.

### Eccentric Lock System

Sandwich panels; thanks to its locked structure it provides a high level of impermeability by pulling the locked panel to itself

Our sandwich panels are in male and female form and are locked to each other with an eccentric locking system using a lock on 1.2m<sup>2</sup>.

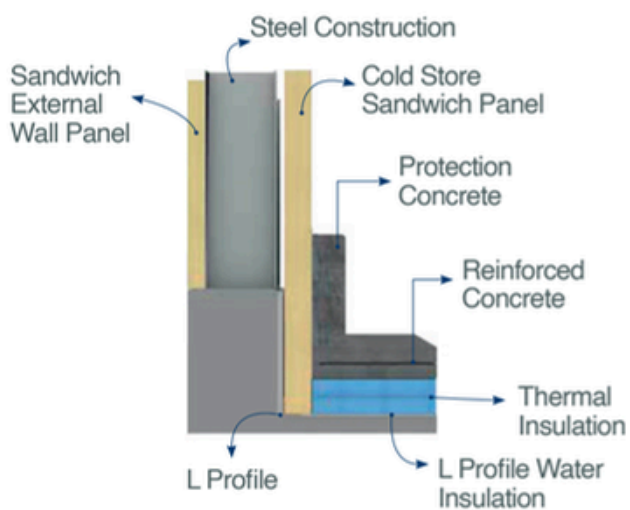
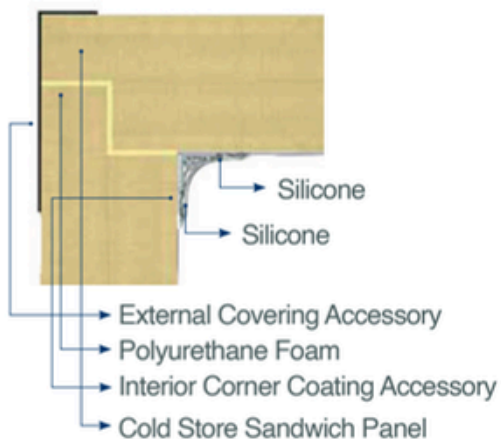
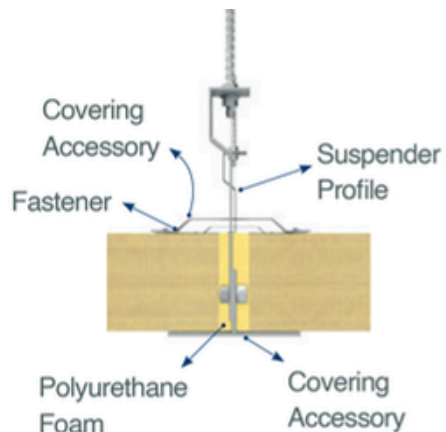
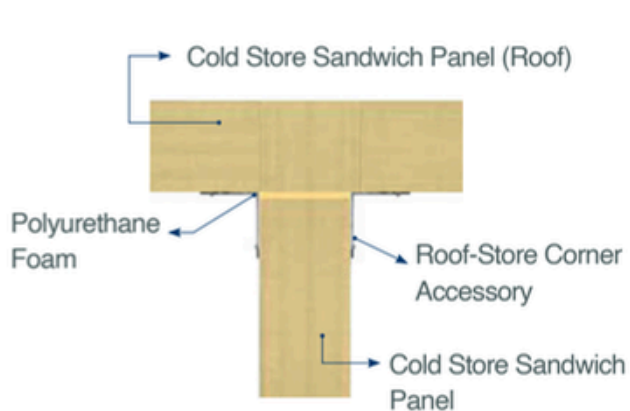


\*Cold room sandwich panels, fire resistance class, and compliance standards are determined individually for each project through mutual consultation based on customer needs and requirements.



# APPLICATION DETAILS

Installation Materials and Details

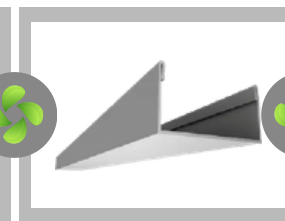
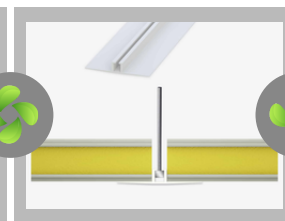
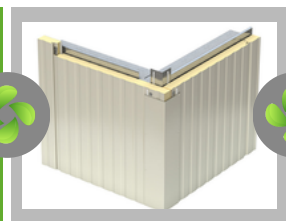
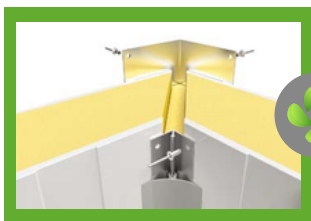
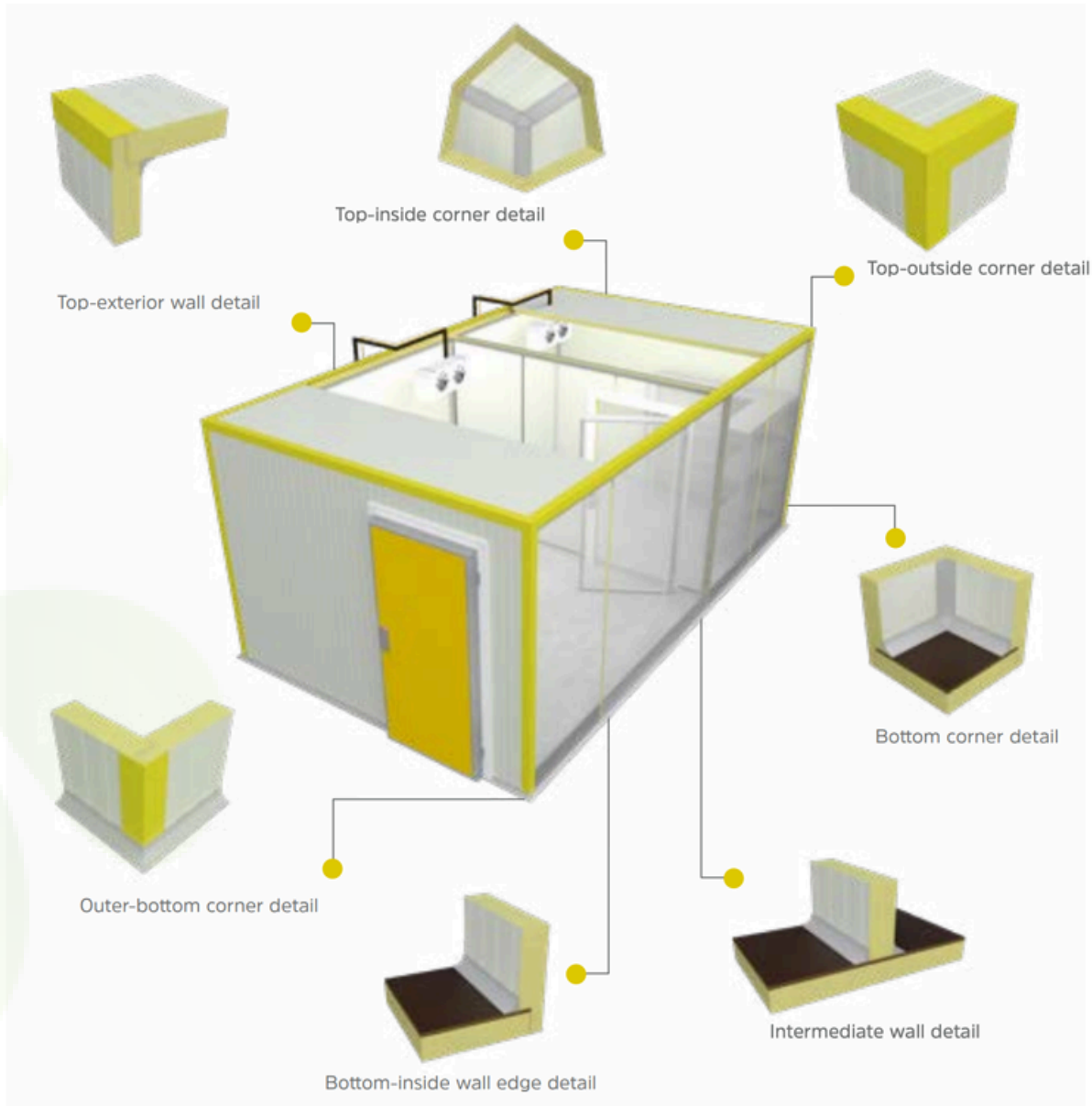


Application Photos



# ACCESSORIES AND PROFILES

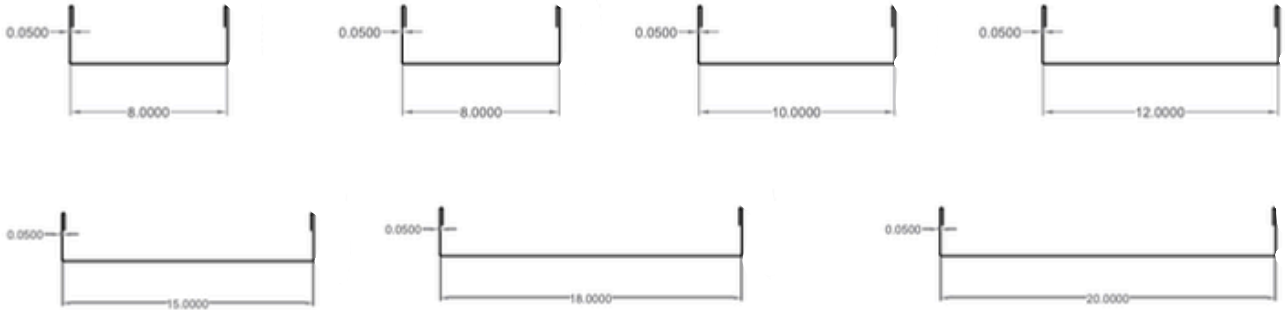
Installation Materials and Details



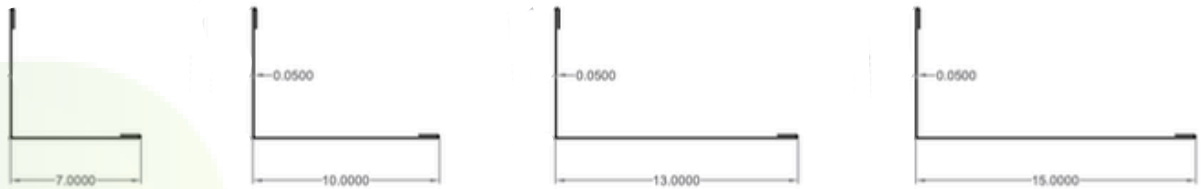
# ACCESSORIES AND PROFILES

Installation Materials and Details

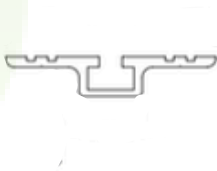
## Floor U Profile



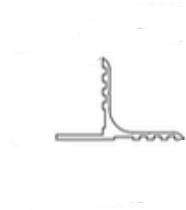
## Outer Corner Profile



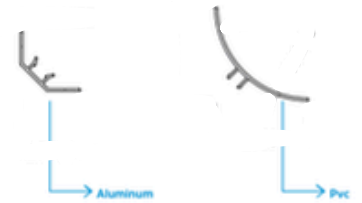
## Ceiling Suspension Profile



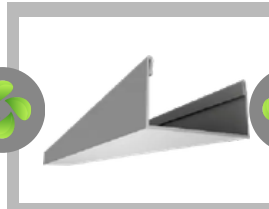
## Ceiling T Profile



## Haccp Inner Corner Profilecorner profile



## ACCESSORIES AND PROFILES

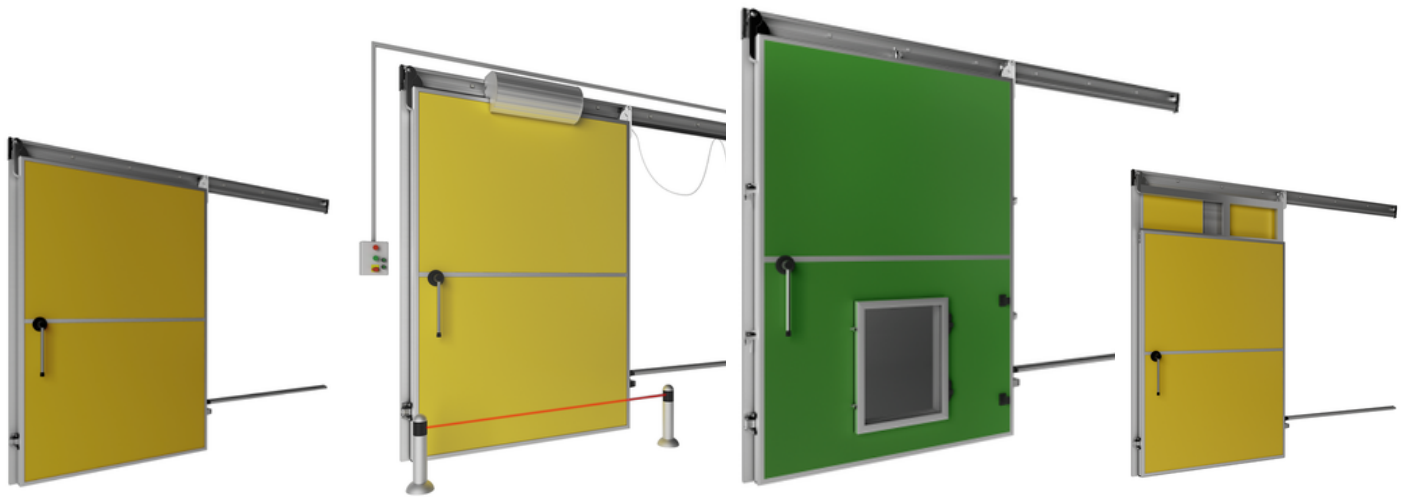


# Integrated Accessories

## Cold Storage Door Systems

### Cold Room Sliding Doors

When designing sliding cold room doors, we focus on high quality standards and user needs. In the engineering details of Frigocare sliding cold room doors, benefit and efficiency are at the forefront.



### Sliding Cold Room Door Design Features

**Thermal Insulation:** Our doors offer excellent thermal insulation, particularly thanks to high-density polyurethane insulation. We contribute to energy efficiency by minimizing cold air loss.

**Air Tightness:** Door frames are equipped with high-quality sealing gaskets, preventing outside air from entering.

**Durability:** Door panels are made of impact- and wear-resistant materials and are designed for long life.

**Safety:** Safety features are a top priority. Doors are equipped with emergency exit handles and easy-to-open locking mechanisms.

**Easy Installation and Maintenance:** The door system is designed for easy installation and minimal maintenance requirements. Modular structures allow for quick on-site installation.

**Customizable Design:** We offer various sizes and options that can be customized according to different room sizes and customer needs.

**Ergonomics:** User comfort is important, so the doors are ergonomically designed and easy to use.

**Aesthetic Appearance:** In addition to being functional, they are designed to blend in with the space aesthetically.

At Frigocare, we understand that designing a sliding cold room door encompasses a wide range of factors, from the quality of the materials used to the ease of installation, from user ergonomics to energy efficiency. We meticulously address each feature in line with our understanding of customer satisfaction and operational excellence.

### Material Quality and Insulation Properties

Frigocare Sliding Cold Room Doors have become an indispensable part of industrial cold storage facilities thanks to their material quality and superior insulation properties. We use the highest quality materials to manufacture these doors, ensuring longevity and high performance.

**Stainless Steel Surfaces:** We equip our cold room doors with corrosion-resistant and easy-to-clean stainless steel surfaces. This contributes to maintaining a hygienic environment, especially in food storage and processing areas.

**High-Density Polyurethane Insulation:** Our door panels are insulated with high-density polyurethane to prevent cold air from escaping and maximize energy efficiency. This insulation material provides excellent resistance to temperature fluctuations, preventing cold from seeping into the door.

**Weatherstripping:** The weatherstripping used in our doors creates an extra barrier against dust and air passage, preserving the temperature of the interior space. This weatherstripping is specially designed to provide perfect insulation every time the door is opened.

**Thermal Bridge-Free Design:** Our door frames are designed to prevent thermal bridges. Thermal bridges are points of heat transfer that can lead to energy loss, and our doors are manufactured to eliminate this problem.

The quality standards of our products are designed to best meet industrial needs. With the Frigocare Sliding Cold Room Door, we aim to provide our customers with the best service by prioritizing insulation, safety, and aesthetic appearance.



# Integrated Accessories

## Cold Storage Door Systems

### Flip- Flap Doors

Flip-Flap series door frames are manufactured in two different types: PVC or anodized aluminum. Our TAF/Service door frames are suitable for all types of hygienic washing.



### TAF/SERVICE DOOR LEAF

TAF/Service door leaves are 40mm thick.

Door leaves are manufactured as monoblocks with CFC-free polyurethane foam filling at 40-43 kg/m<sup>3</sup>.

The frame of the leaf is made of anodized aluminum in all our TAF/Service doors.

All doors have support plates inside the door leaf for all accessories located on the door leaf.

All TAF/Service door leaves come standard with one inspection window.

The door leaf is manufactured as standard from 0.5 mm thick galvanized sheet metal coated with 130µ PVC. Upon request, it can also be manufactured from 25µ RAL painted or A304 grade stainless steel sheet metal. If desired, sheet metal thicknesses between 0.5 and 1.2 mm can also be manufactured.

Our door wings are suitable for all types of hygienic washing.

You can request technical drawings of our products from our technical department and submit an inquiry to conduct feasibility assessments. You can obtain more detailed information about our TAF/Service doors.



# Integrated Accessories

## Cold Storage Door Systems

### Single-Hinged Cold Room Door

Hinged doors are basically divided into two types. Doors for rooms to be maintained at temperatures of 0°C and above are called cold room doors, while doors for rooms to be maintained at temperatures below 0°C are called frozen storage room doors. Single-leaf hinged doors and double-leaf options are available. All our hinged doors can be fitted with accessories such as automatic door closers, viewing windows, kick plates, etc., upon request.



### HINGED DOOR FRAME

Hinged cold room door frames are manufactured in two different types: PVC or anodized aluminum. Hinged frozen storage room doors with aluminum frames have a single row of heating resistors inside the frame. Our hinged door frames are suitable for all types of hygienic washing.

### HINGED DOOR LEAF

Hinged cold room doors are available with 70 and 90mm thick door leaves, while frozen storage room doors are available with 90, 120, and 150mm thick door leaves. Hinged cold storage door wings are manufactured as monoblocks with 40-43 kg/m<sup>3</sup> CFC-free polyurethane foam filling. The frame of the wing is made of anodized aluminum in all our hinged doors. All hinged doors have support plates inside the door leaf for all accessories on the door leaf. Hinged cold room doors have a single row of EPDM gasket on the door leaf, while frozen room doors have a double row of EPDM gasket (except CBT9). Hinged frozen room doors have a single row of heating resistors inside the gasket.

Our hinged door leaves are manufactured as standard in 0.5 mm thick 130μ PVC-coated galvanized sheet metal. Upon request, they can also be manufactured in 25μ RAL painted or A304 quality stainless steel sheet metal. If desired, sheet metal thicknesses between 0.5 and 1.2 mm can also be produced.

Our hinged cold storage door panels are suitable for all types of hygienic washing.



# Integrated Accessories

Cold Storage Loading and Unloading Systems

## Industrial Doors

Industrial doors are composed of PU (polyurethane) foam-filled panels that are extremely resistant to outdoor environmental conditions. They are the most preferred insulated doors, especially in loading and unloading areas where insulation is a priority. They are the most preferred door type among industrial doors.



## High-Performance Cold Storage Panel Solutions

Industrial doors consist of horizontal panels joined together and open and close by moving upward within vertical rails. These insulated, quiet, and durable doors, with motorized or manual alternatives, are widely preferred in industrial facilities due to their aesthetic, economic, and functional advantages. They offer alternative application options with minimal space requirements for your current needs. All doors are manufactured in accordance with international quality standards.

The standard bellows are the most commonly used type of bellows in loading/unloading systems. They are used where high thermal insulation is not required. They consist of an aluminum profile attached to the outer wall of the loading compartment, a PVC sheet surrounding the profile, and black PVC-coated flaps on the front that attach to the truck.



# Integrated Accessories

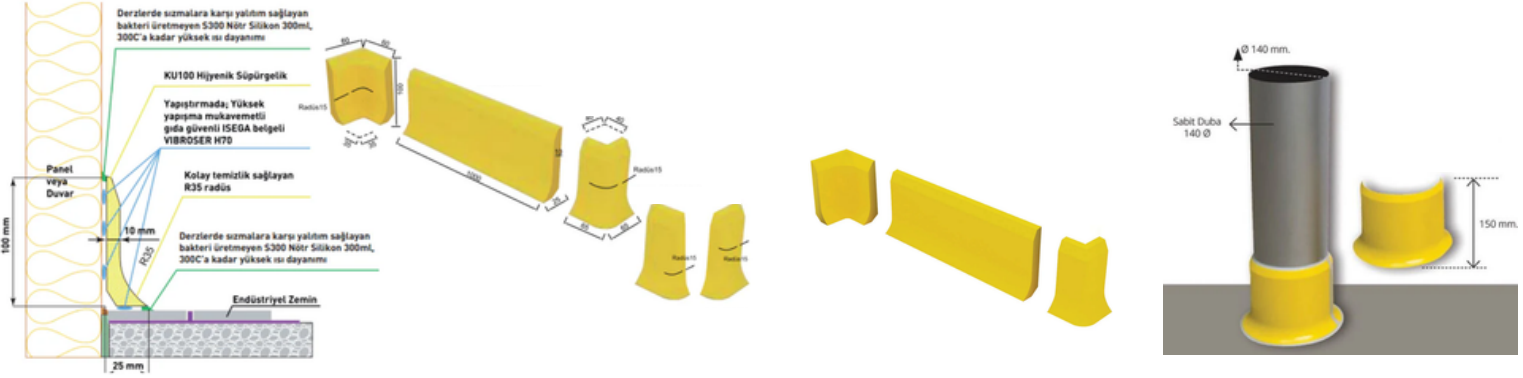
## Cold Storage Hygienic Protection Systems

### Usage Areas of Hygienic Skirting Board

Commercial kitchen skirting, also known as antimicrobial skirting, is used in areas that require high-level hygiene processes. In food production areas, measures should be taken to prevent the formation of bacteria and ensure all hygiene conditions. In sectors that require high hygiene, such as food and health, special skirting panel protectors are used to emphasize quality and hygiene in cold rooms, which are used as storage areas. They are the best solutions to provide a hygienic environment in all cold product processing and storage areas.

Usage areas of hygienic skirting boards;

Food processing plants that process raw materials such as fruits, vegetables, cereals and meats and transform them into convenience food products such as canned foods, frozen foods or bakery products.



- Facilities processing milk and other dairy products such as cheese, yogurt and butter,
- Facilities producing beverages such as fruit juices, carbonated drinks and alcoholic drinks,
- Facilities for the preparation and baking of bread, cakes, pastries and other bakery products,
- Confectionery facilities producing candies, chocolates and other sweet treats,
- Food packaging facilities that package and label convenience food products for distribution and sale,
- Commercial kitchens that prepare and cook food for sale in restaurants, cafes and other food service establishments,
- Textile, chemistry and cosmetics sectors,
- Malls and supermarkets,
- These products used in many areas such as hospitals, laboratories, pharmaceutical factories and pharmaceutical warehouses in the health sector.



# Integrated Accessories

## Floor Heating

Well sealed cold stores may suffer structural damage due to pressure caused by changes in internal and external temperatures if not adequately vented to atmosphere. Frigocare Refrigeration offers a wide selection of pressure valves to keep the internal and external pressures of cold stores in balance.

Cold air released from the internal environment of cold stores may freeze the moisture contained within the soil underneath their foundation. This may result in expansion of the ground soil causing damage to the foundation and floor of the cold stores. Danfoss offers heating mats for cold stores as a preventative measure against frost damage and dampness.

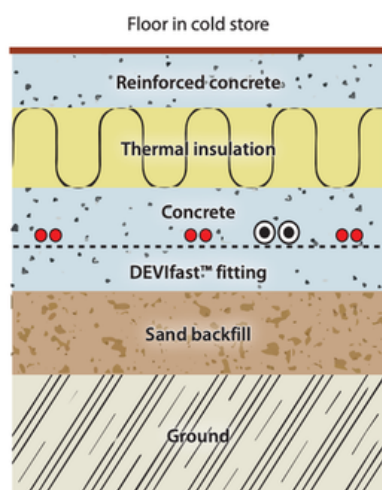


Fig. 1 – Heating cable in the concrete screed

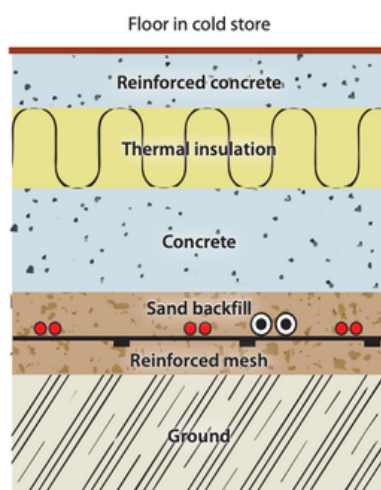


Fig. 2 – Heating cable in the sand backfill

The heating cable for the Frost Heave Prevention System is located under the main floor insulation of the cooling facility, typically into sand backfill or concrete screed (fig. 1 and fig. 2).

Heating cable should be placed under the insulation layer of the floor to offer frost protection. Cables should be placed directly on top of the hardened concrete only, as an option can also be separated from the floor surface with the damp proof membrane. The cables should be installed at least 5 cm below the insulation. The floor construction must comply with local norms and regulations.

The main object of heating, in the Frost Heave Prevention System, is to provide frost protection of foundation in premises where temperature is constantly maintained below zero (cold storages, ice stadiums, etc.). Installation of an indoor frost protection system is required and electrical heating cables embedded in concrete is a solution to prevent frost heaving.

Frost heave can cause floor slab cracking, damage to support structures and foundations. In such cases underfloor heating is needed in order to avoid freezing or other related problems and prevent destruction of foundation structures. The heating cable in this case is located below the main floor insulation of the cold storage, typically in the sand backfill or in concrete screed. For safety reasons: two identical parallel heating systems should be installed (main and reserve).



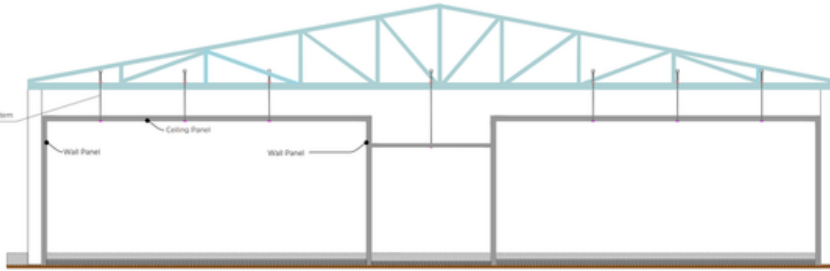
# Construction Types

## Construction Solutions

### Construction Solutions

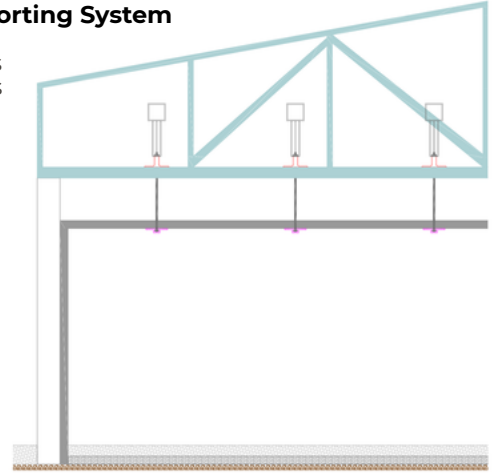
Internal Box in Box Insulated Self-Supporting System

Applications : Chilled and Cold Storage  
Main structure : Portal or truss construction



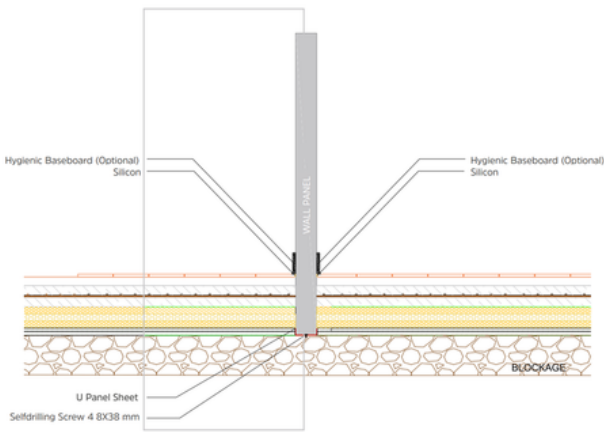
### Internal Box in Box Insulated Self-Supporting System

Insulated roof panels  
Insulated wall panels  
Suspension system

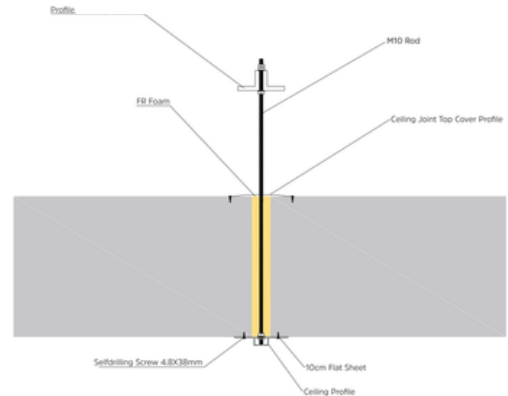


### Wall to Floor Connection

Wall to Floor Connection

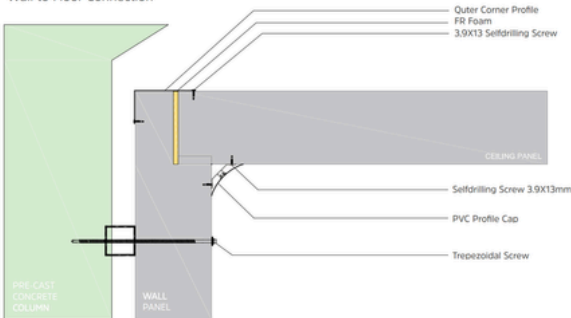


### Ceiling Suspension System

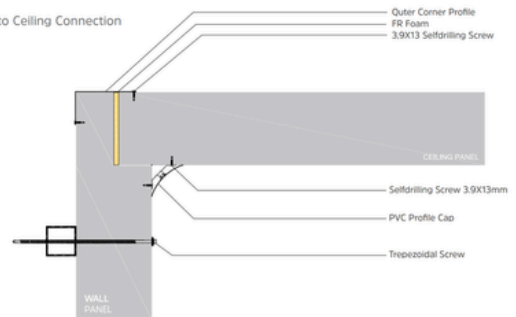


### Internal Box in Box Insulated Self-Supporting System

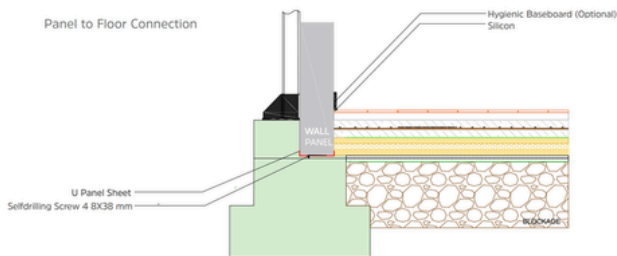
Wall to Floor Connection



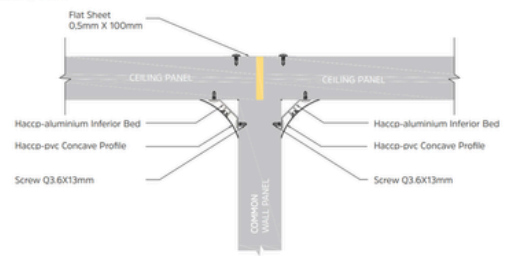
Wall to Ceiling Connection



Panel to Floor Connection



Wall to Ceiling Joint



### Internal Insulated System with Partial External Wall Cladding



# Referanslar

## References



# Contact Details

## Company Center

### Türkiye

### Factory

#### Frigocare Soğutma Isıtma Cihazları San ve Tic. Ltd.Şti

Fabrika: Arlı Sanayi Sitesi | Fevziçakmak Mah.  
Şehit M.Tünel Cad. No:7/E | Karatay/Konya/Türkiye

T: +90 (332) 245 50 32  
Gsm: +90 (545) 517 79 75  
E: info@frigocare.com.tr  
[www.frigocare.com.tr](http://www.frigocare.com.tr)  
[www.frigocarerefrigeration.com](http://www.frigocarerefrigeration.com)



For your offers and requests  
please send an email to [info@frigocare.com.tr](mailto:info@frigocare.com.tr)

#### Frigocare Konya Teknopark R&D Center

Konya Teknoloji Geliştirme Bölgesi |  
TGB1 Alanı | Akademi Mah. Gürbulut Sok. |  
No: 67A-B01/N | Selçuklu/Konya/Türkiye

T: +90 (332) 245 50 32  
Gsm: +90 (545) 517 79 75  
E: info@frigocare.com.tr  
[www.frigocare.com.tr](http://www.frigocare.com.tr)  
[www.frigocarerefrigeration.com](http://www.frigocarerefrigeration.com)



For the product offering in other markets please contact your local sales representative or visit [www.frigocarerefrigeration.com](http://www.frigocarerefrigeration.com) Care has been taken to ensure that the contents of this publication are accurate, but Frigocare Soğutma Isıtma Cihazları San ve Tic.Ltd and its subsidiary companies do not accept responsibility for errors or for information that is found to be misleading. Suggestions for, or description of, the end use or application of products or methods of working are for information only and Frigocare Soğutma Isıtma Cihazları San ve Tic.Ltd and its subsidiaries accept no liability in respect thereof.



**FRIGOCARE®**

Keep Your Food Safe